

THE BEAUTYWELL PROJECT

MERCURY FACT SHEET

for Business Owners

Skin lightening creams & soaps have mercury in them.
Mercury is dangerous and bad for people's health.



WHAT IS MERCURY?



Mercury is a toxic metal in skin lightening products.

WHY SHOULD I BE WORRIED ABOUT MERCURY?

Mercury is toxic, which means it is bad for your health. Mercury exposure causes:

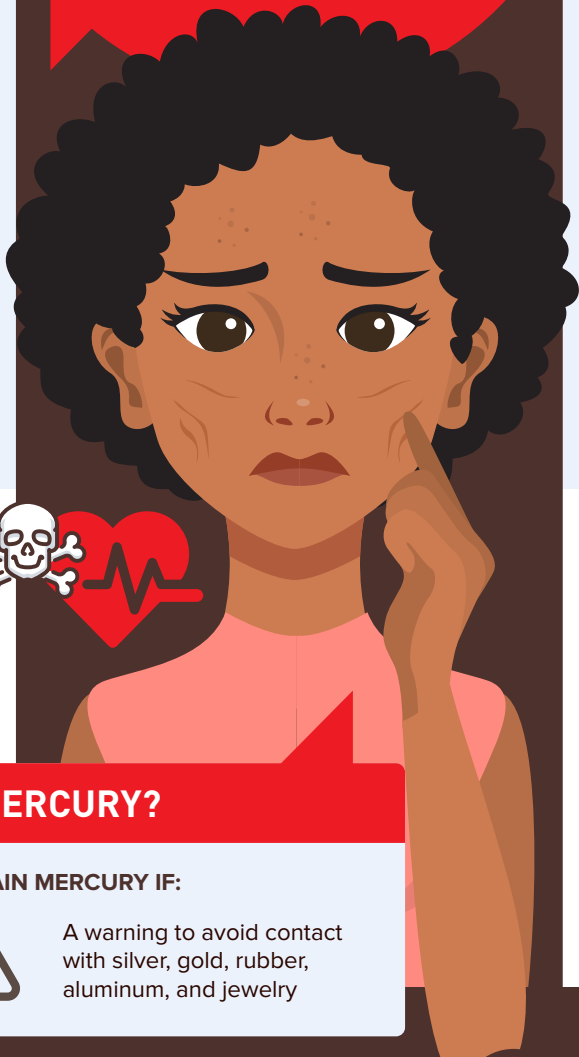
- Skin rashes, discoloration, scars
- Anxiety, depression, psychosis
- Kidney damage
- In children: **brain, vision, and hearing damage**

Mercury in open skin lightening products can also harm other people in the home or store.

- A child who touches their mother's skin
- A family member who eats food from the fridge where the product is kept
- A family member who breathes the air
- A baby who is being breastfed
- A baby before it is born from their pregnant mother

WHAT PRODUCTS CONTAIN MERCURY?

- ✔ Creams
- ✔ Lotions and Soaps used for skin lightening
- ✔ Skin Brightening
- ✔ Skin Whitening
- ✔ Dark Spots
- ✔ Age Spots
- ✔ Blemishes
- ✔ Freckles
- ✔ and Acne have been found to contain mercury.



HOW DO I KNOW IF A PRODUCT CONTAINS MERCURY?



THE INGREDIENT LIST SAYS

"mercury," "mercurous chloride," "calomel," "mercuric," or "mercurio."



No ingredient list or no label



A warning to avoid contact with silver, gold, rubber, aluminum, and jewelry

WHAT SHOULD I DO WITH PRODUCTS IN MY STORE THAT CONTAIN MERCURY?



Do not sell them and do not throw them in the trash! It is illegal to sell cosmetics with mercury in them in Minnesota. Mercury is also very bad for the environment.



BRING THE PRODUCTS TO YOUR LOCAL HOUSEHOLD HAZARDOUS WASTE DROPOFF PLACE. IT'S FREE!



Hennepin County: 1400 W 96th St, Bloomington, MN 55431 or 8100 Jefferson Hwy, Brooklyn Park, MN 55445



Ramsey County: Bay West, 5 Empire Dr, St Paul, MN 55103



QUESTIONS OR NEED HELP? CONTACT AMIRA ADAWE AT THE BEAUTYWELL PROJECT!



612-250-4263

amira.adawe@thebeautywell.org

www.thebeautywell.org